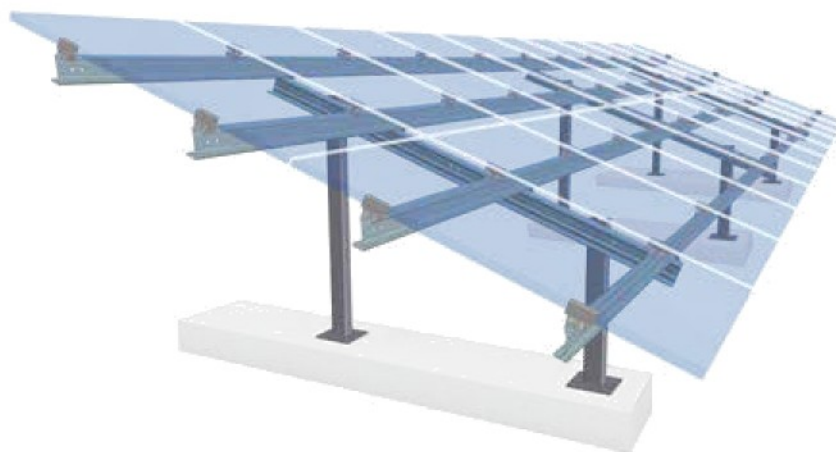


SCHLETTER

The Solar Mounting Group

PV MAX S

PRODUCT SHEET



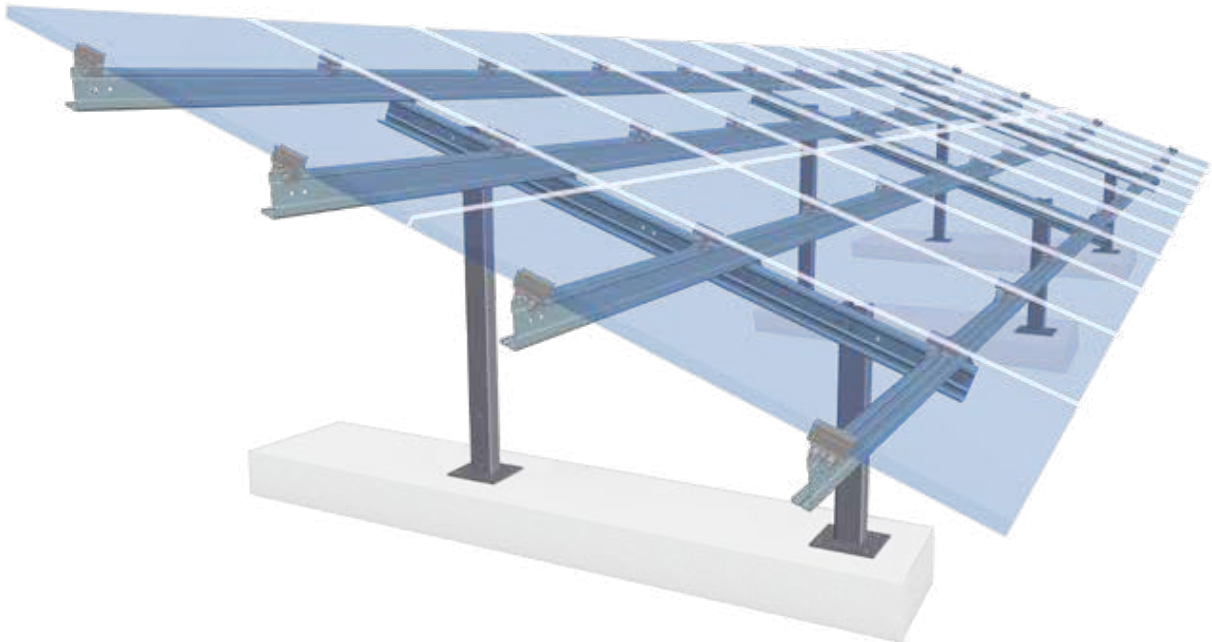
PV MAX S

THE COST-EFFECTIVE AND EFFICIENT OPEN AREA SYSTEM WITH CONCRETE FOUNDATIONS

The PvMax-S is the new addition to our FS steel family of products. PvMax-S combines FS Duo with concrete foundations and finally offers a cost-effective steel version of the aluminium PvMax3.

Making the foundations for open area systems from concrete is an effective method for building on terrains where it's impossible to use ramming foundations or where this would not be an economically viable option. This includes terrains where the soil is contaminated by chemicals, meaning that it is no longer feasible to use steel foundations because of the risk of corrosion. It's also an alternative option for smaller PV systems, as specialist soil surveys or test ramming would be too expensive and disproportionate in relation to the overall financial investment.

- **Quick and cost-effective project planning, even with special planning**
- **Complete structural analysis, incl. foundation calculation with dowel recommendation**
- **5-year guarantee**



Technical data

Material	Fastening elements, screws: steel, hot-dip galvanised and zinc scale coated. Ram foundations: steel, strip-galvanised in accordance with DIN EN 10327 Trussed rafters/purlins: steel, coated with zinc magnesium alloy. Alternatively, strip-galvanised in accordance with DIN EN 10327.
Logistics	<ul style="list-style-type: none">• Individual part delivery, can be pre-assembled to as large an extent as possible upon request• Transfer to the building site adapted to the assembly
Construction	Quick and simple assembly
Foundations	<ul style="list-style-type: none">• Cast-in-place concrete on site according to our specifications• Concrete foundations in pre-fabricated components according to the structural system analysis
Delivery and services	<ul style="list-style-type: none">• Individual structural frame analysis based on local data• Delivery of all installation materials
Structural analysis	<ul style="list-style-type: none">• Individual structural terrain analysis based on an external soil survey• Individual structural system analysis based on the regional load values• Load assumptions according to DIN EN 1990 (Eurocode 0), DIN EN 1991 (Eurocode 1), DIN EN 1993 (Eurocode 3), DIN EN 1999 (Eurocode 9) and other, relevant, country-specific standards• Highly-efficient, material-saving profile geometries• Verification of all construction components based on FEM calculations

Further information is available at: www.schletter-group.com

SCHLETTER SOLAR GMBH

Alustrasse 1
83527 Kirchdorf
GERMANY

www.schletter-group.com

