

Modulostar®

Helio



Advantages

- Modulostar® fuse holder, with or without blown fuse indicator
- Specially designed for photovoltaics and D.C., applications in general
- Built to UL 512 and 60947-3 standards
- For fuses up to 32A 10x38
- Blown fuses indication from 350VDC to 1000VDC
- Plastic port are UL94 V0 to V2 (yellow card)
- In accordance with RoHS directive

Nb of pole	Cat. Number	Ref. Number	Nb of Mode (17.5mm)	Pack	Indicator
1	US101HEL	D1009979K	1	12	Without Ind.
1	US101IHEL	Q1009461K	1	12	With Ind.

Characteristics

- **Wiring:** rigid wire = 1 - 16mm² (18-6AWG), flexible wire = 0.75 - 10mm² (18-8AWG) use 75°C wire CO only
- **Screw driver heads:** Ferraz Shawmut recommends use of PZ 2 or flat 5.5x1mm heads (maximum diameter 6mm)
- **Maximum tightening torque:** 2.2Nm
- DC20B-IP2X

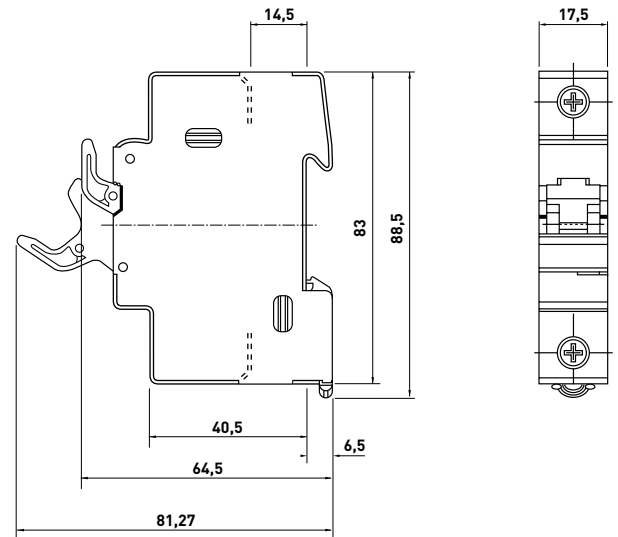
Nominal Voltage U _i DC	Voltage Isolation U _{imp}	Nominal Current	Max. power losses in the fuse links	Fuse links rating	Cable wire section (mm ²) recommended
1000VDC Pollution Degree 2	6kV	32A	3W	≤12	2.5
	6kV	32A	3W	16	2.5
	6kV	32A	3W	20	2.5
	6kV	32A	3W	25	4
	6kV	32A	3W	30	6

Recommendations

- Do not operate under load
- **The PV source** must be connected to the upstream terminal
- **Non insulated conductive parts:** preferably the equipment should be laid out keeping the + and - polarities separate
- **Mounting with surge suppressors:** check that the surge suppressors' Up is compatible with the US10's IU imp=6kV (see UTE C15-712)

Accessories

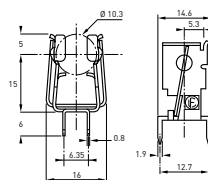
Same as the entire Modulostar® range



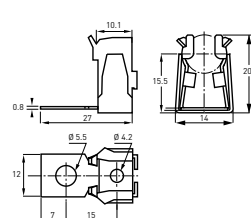
Fuse clips

Cat. Number	Designation	Weight	Pack
MR10RESSORTCI	MR10 CI	4.5	200
MR10RESSORT	MR10	7.0	20
MR10RESSORTSP	MR10 without connecting lug	5.7	20

MR10 CI



MR10



MR10 without connecting lug

