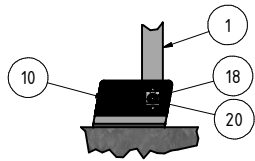
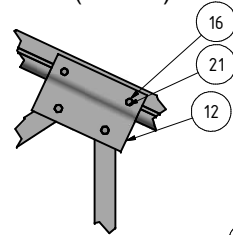


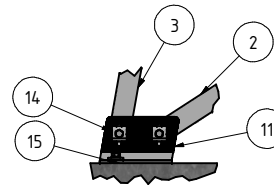
DETAIL F (1 : 10)



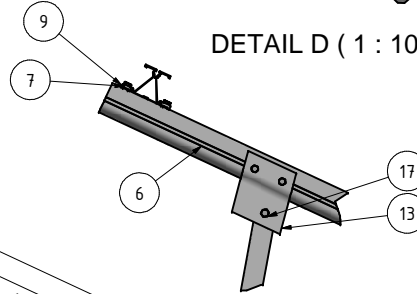
DETAIL E (1 : 10)



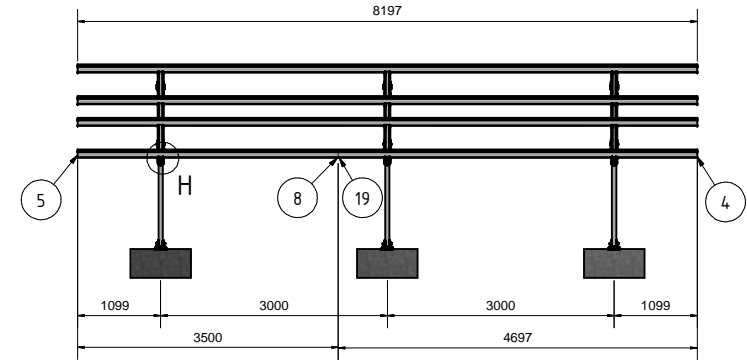
DETAIL G (1 : 10)



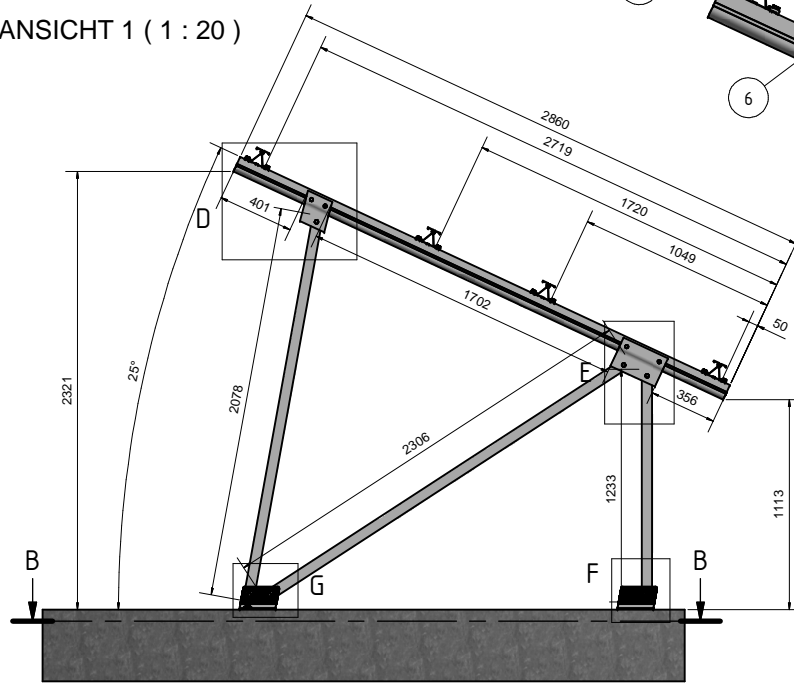
DETAIL D (1 : 10)



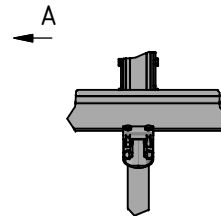
A (1 : 50)



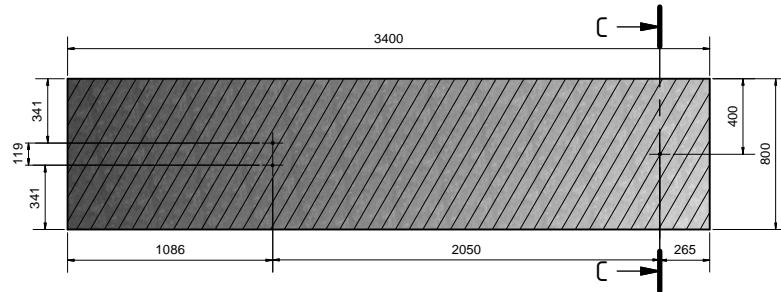
ANSICHT 1 (1 : 20)



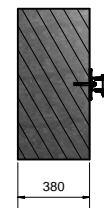
DETAIL H (1 : 10)



SCHNITT B-B (1 : 20)



SCHNITT C-C (1 : 20)



| Teilleiste |        |               |  |         |
|------------|--------|---------------|--|---------|
| OBJEKT     | ANZAHL | BAUTEILNUMMER | BEZEICHNUNG                                | Länge   |
| 1          | 3      | 000011-126    | PVMax3 Strebe 55x55 vorne Masszuschnitt    | 1273 mm |
| 2          | 3      | 000011-127    | PVMax3 Strebe 55x55 diagonal Masszuschnitt | 2246 mm |
| 3          | 3      | 000011-128    | PVMax3 Strebe 55x55 hinten Masszuschnitt   | 2069 mm |
| 4          | 4      | 124303-001    | Modultragprofil S1,5 - Masszuschnitt       | 4697 mm |
| 5          | 4      | 124303-001    | Modultragprofil S1,5 - Masszuschnitt       | 3500 mm |
| 6          | 3      | 124500-001    | Binderprofil BF0 - Masszuschnitt           | 2860 mm |
| 7          | 72     | 129010-001    | KlickIn Einklickbaustein fuer Mutter M10   |         |
| 8          | 4      | 129303-001    | Verbinder fuer Modultragprofil S1,5        | 495 mm  |
| 9          | 24     | 146001-000    | Montagekralle 80mm                         |         |
| 10         | 3      | 147003-001    | Fussprofil PVMax3 vorne                    |         |
| 11         | 3      | 147003-002    | Fussprofil PVMax3 hinten                   |         |
| 12         | 3      | 147004-001    | Gelenkverbinder vorne PVMax3               |         |
| 13         | 3      | 147004-002    | Gelenkverbinder hinten PVMax3              |         |
| 14         | 27     | 147005-000    | Fusskralle PVMax3                          |         |
| 15         | 6      | 147006-000    | Unterlage fuer Fussprofil PVMax3 EPDM      |         |
| 16         | 72     | 943610-025    | Schraube M10x25 6-kant DIN933 A2 GMB       |         |
| 17         | 9      | 943612-080    | Schraube M12x80 6-kant DIN931 A2 GMB       |         |
| 18         | 9      | 943612-100    | Schraube M12x100 6-kant DIN931 A2 GMB      |         |
| 19         | 8      | 943755-925    | Schraube 5,5x25 selbsffurchend JT3-6 A2    |         |
| 20         | 18     | 943912-012    | Flanschmutter M12 Sperrverza DIN6923 A4    |         |
| 21         | 72     | 943914-010    | Mutter M10 4Kant DIN557 A4                 |         |

|                           |             |                                |                    |                 |              |
|---------------------------|-------------|--------------------------------|--------------------|-----------------|--------------|
| <b>SCHLETTNER</b><br>GmbH |             | Material:                      | Maßstab:           | Kunde:          | Information: |
|                           |             |                                | 1:20               |                 |              |
|                           |             | Datum:                         | Name:              | Vorgangsnummer: | Information: |
|                           |             | 08.08.2013                     | Fran. Al           |                 |              |
|                           |             | Bezeichnung/Projekt/Kommentar: |                    |                 |              |
|                           |             | PM2V-25*-8_NR                  |                    |                 |              |
|                           |             | Toleranzangaben:               | Projekthandskizze: | Artikelnummer:  | 1            |
|                           |             |                                |                    |                 | A2           |
| Status:                   | Änderungen: | Datum:                         | Name:              | Gezeichnet:     | Geprüft:     |