

Schletter Standard

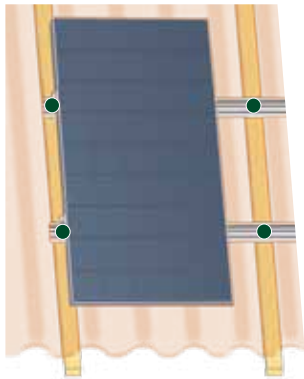
The standard system for pitched roofs

- Can be combined with all Schletter system components
- Simple mounting
- Economically priced

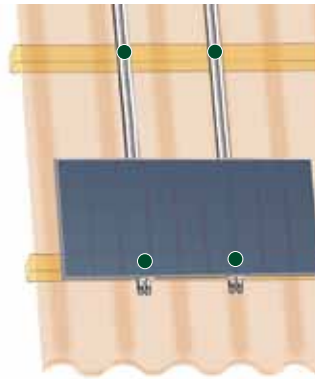


Description

Generally, two horizontal cross beams carry one module row. The cross beams are connected to the substructure respectively to the roof cladding by means of roof hooks or special fixation elements.



Vertical to the substructure - rafter



Vertical to the substructure - purlin

The modules are fixed to the cross beams by means of middle and end clamps. Usually, the modules are mounted vertically.

We grant a voluntary 10-year warranty on all Schletter mounting systems.

Connectors

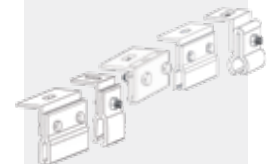


Roof hook also with KlickTop



Corrugated roof set

NEW



Standing seam clamps



Trapezoidal sheet metal clamp
Fix2000 / Fix2000 KlickTop



Special fixation on sheet metal roofs
FixPlan

NEW

and others ...

