

Rolls

FLOODED DEEP CYCLE BATTERIES

T12 250



12 VOLTS

CONTAINER:	Polypropylene
COVER:	Polypropylene
TERMINALS:	Automotive (flag specified)
HANDLES:	Rope

WEIGHT DRY:	44 kg	97 Lbs.
WEIGHT WET:	57 kg	125 Lbs.
LENGTH:	391 mm	15 3/8 Inches
WIDTH:	178 mm	7 Inches
HEIGHT:	365 mm	14 3/8 Inches

PLATE HEIGHT:	254 mm	10.000 Inches
PLATE WIDTH:	143 mm	5.625 Inches
THICKNESS (POSITIVE):	4.32 mm	0.170 Inches
THICKNESS (NEGATIVE):	3.05 mm	0.120 Inches



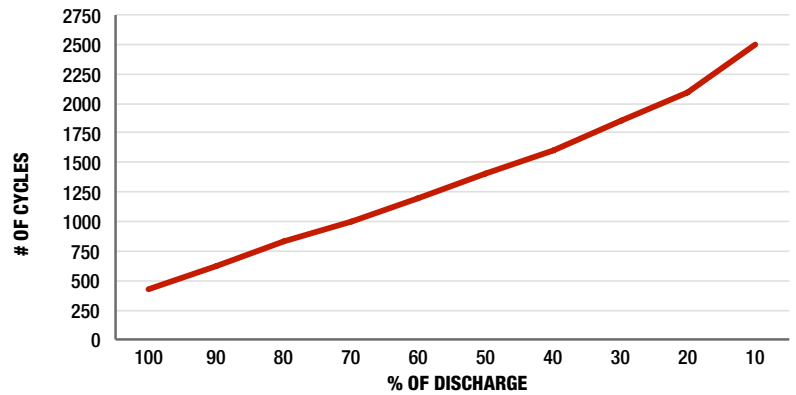
CELLS:	9 Plates/Cell	6 Cell
SEPARATOR THICKNESS:	2 mm	0.081 Inches
GLASS MAT INSULATION:	1 mm	0.02 Inches
ELECTROLYTE RESERVE: ABOVE PLATES	51 mm	2 Inches

COLD CRANK AMPS (CCA):	0°F / -17.8°C	648
MARINE CRANK AMPS (MCA):	32°F / 0°C	810
RESERVE CAPACITY (RC @ 25A):		390 Minutes

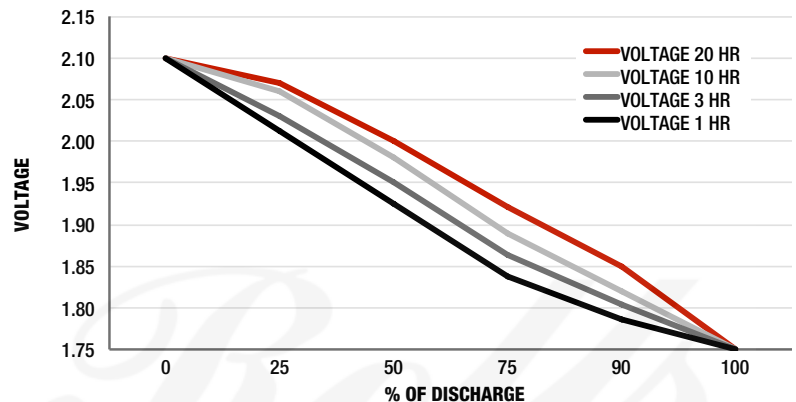
CAPACITY **200 AH**

HOURLY RATE:	SPECIFIC GRAVITY	CAPACITY / AMP HOUR	CURRENT / AMPS
@ 100 HOUR RATE	1.280	266	2.66
@ 72 HOUR RATE	1.280	252	3.50
@ 50 HOUR RATE	1.280	238	4.76
@ 24 HOUR RATE	1.280	206	8.58
@ 20 HOUR RATE	1.280	200	10.00
@ 15 HOUR RATE	1.280	188	12.53
@ 12 HOUR RATE	1.280	178	14.83
@ 10 HOUR RATE	1.280	170	17.00
@ 8 HOUR RATE	1.280	160	20.00
@ 6 HOUR RATE	1.280	148	24.67
@ 5 HOUR RATE	1.280	140	28.00
@ 4 HOUR RATE	1.280	130	32.50
@ 3 HOUR RATE	1.280	118	39.33
@ 2 HOUR RATE	1.280	102	51.00
@ 1 HOUR RATE	1.280	72	72.00

CYCLE LIFE VS. DEPTH OF DISCHARGE



VOLTAGE VS. DEPTH OF DISCHARGE





PART NUMBER: T12250

WEIGHT WET: 125 LB / 57 KG

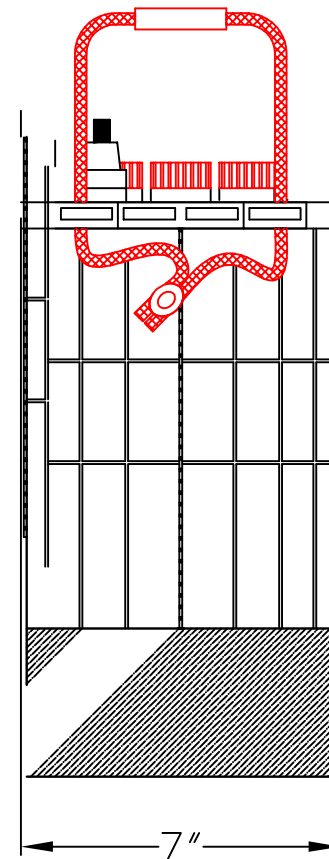
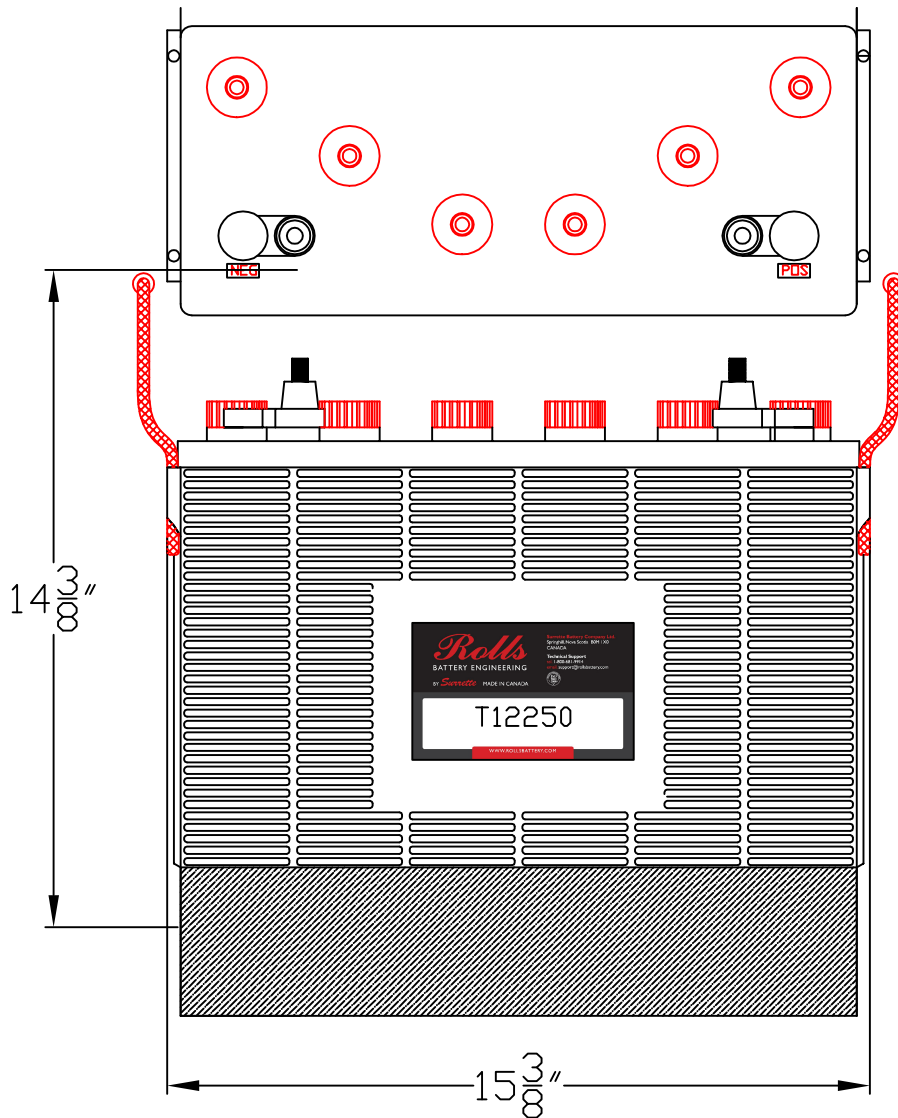
WET DRY: 97 LB / 44 KG

CAPACITY 200 AH 20 HR

VOLTAGE: 12 V

OVERALL DIMENSIONS: 15³/₈" X 7" X 14³/₈"

MAX HEIGHT WITH OPTIONAL HYDROCAPS 14 3/4"



Rolls
BATTERY ENGINEERING

TITLE: T12250

DESCRIPTION: 12V DEEP CYCLE SERIES 400/4000

CONTACT INFO:
WEB: WWW.ROLLSBATTERY.COM
E-MAIL: SALES@ROLLSBATTERY.COM
PHONE: 1-800-681-9914

SCALE: 1" = 4" JPEG:
8.5" X 11" NOT TO SCALE

Drawn by: S. WILES Approved By: D. SURRETTE

DATE: 5-FEB-01 REVISION 0

DRAWING NO.: DWG 046, BD-T12250