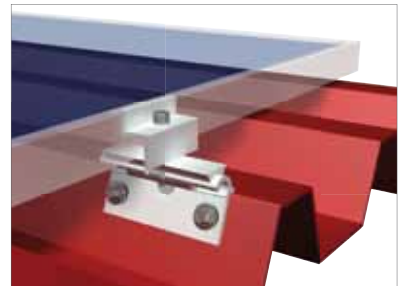


# ClampFit-H

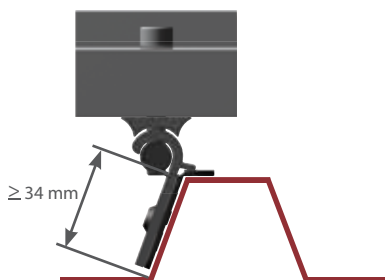
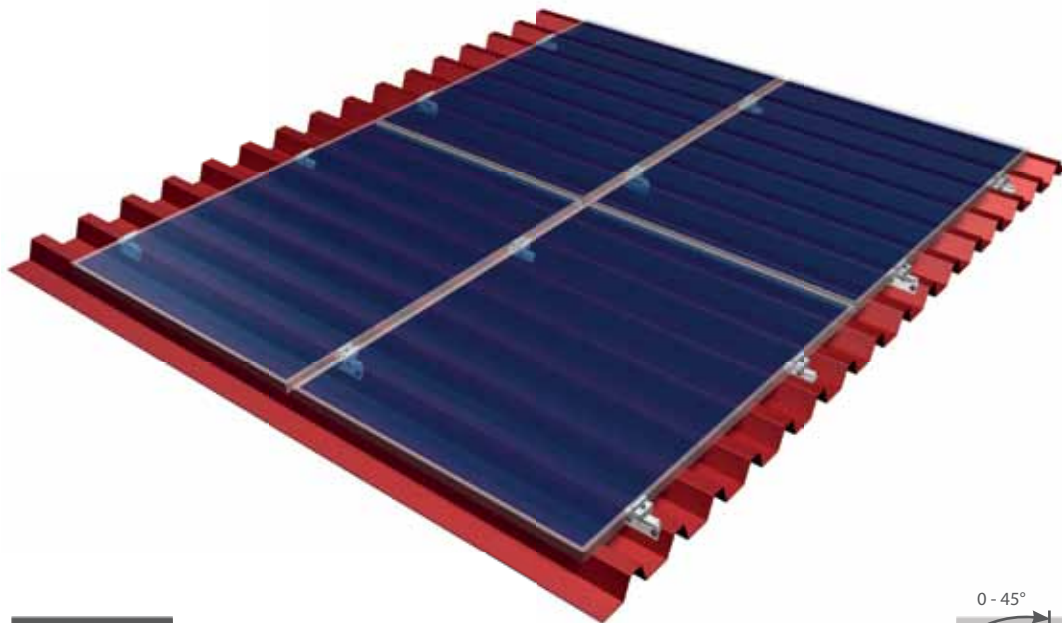
## Product sheet

- Completely pre-assembled
- Quick mounting
- Favourable system price

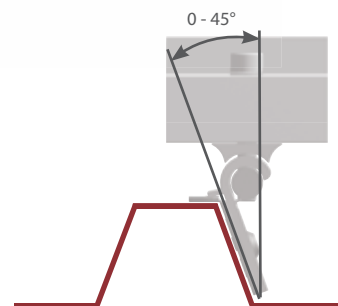


Simpler, more cost-efficient, quicker to mount and, as far as possible, convenient to plan, order and store - these are the benefits and characteristics which should be offered by the new mounting systems and parts of today. The new trapezoidal roof fastener ClampFit-H is designed for the horizontal mounting of modules on trapezoidal sheet metal roofs and fulfils all these requirements in an exemplary manner. It is also an optimal supplement to the universally applicable range of Schletter fasteners.

Although this fastening system undercuts, once again, €/kW system prices which were affordable thus far, the ClampFit-H system still complies with the strict Schletter quality guidelines: Optimal distribution of forces is achieved by fastening through the side flank. This avoids an overload of forces at single points, even on very thin sheeting. The possibility of screws loosening through thermal expansion and load change is thus excluded.



The system is suited to all trapezoidal sheet metal types with a beading height of min. 34mm and with a pitch of max. 45°.



## Component overview



**130004-001** ClampFit-H middle clamp 30-35 mm kit

**130004-002** ClampFit-H middle clamp 36-40 mm kit

**130004-003** ClampFit-H middle clamp 41-45 mm kit

**130004-004** ClampFit-H middle clamp 46-51 mm kit



**130003-030** ClampFit-H end clamp 30 mm kit

**130003-031** ClampFit-H end clamp 31 mm kit

**130003-034** ClampFit-H end clamp 34 mm kit

**130003-035** ClampFit-H end clamp 35 mm kit

**130003-038** ClampFit-H end clamp 38 mm kit

**130003-040** ClampFit-H end clamp 40 mm kit

**130003-042** ClampFit-H end clamp 42 mm kit

**130003-045** ClampFit-H end clamp 45 mm kit

**130003-046** ClampFit-H end clamp 46 mm kit

**130003-048** ClampFit-H end clamp 48 mm kit

**130003-050** ClampFit-H end clamp 50 mm kit

## Technical data

**Material** System components: aluminium; Screws: stainless steel; Seal: EPDM

**Structural analysis** Structural analysis in accordance with current national standards; in Germany DIN EN 1991 (EC1). Depending on the system, there are 4 fastening points per module. In case of high wind or snow loads or if large modules are used, more fastening points may be required. Please ensure you observe the structural analysis information for each case. The verification of the adhesive force of the roof to the substructure is not included in the general structural analysis attachments!

Further information at [www.schletter.eu](http://www.schletter.eu)

\*in accordance with our General Terms and Conditions of Sale and Supply ([www.schletter.de/AGB\\_en](http://www.schletter.de/AGB_en))  
Subject to changes and/or technical modifications.