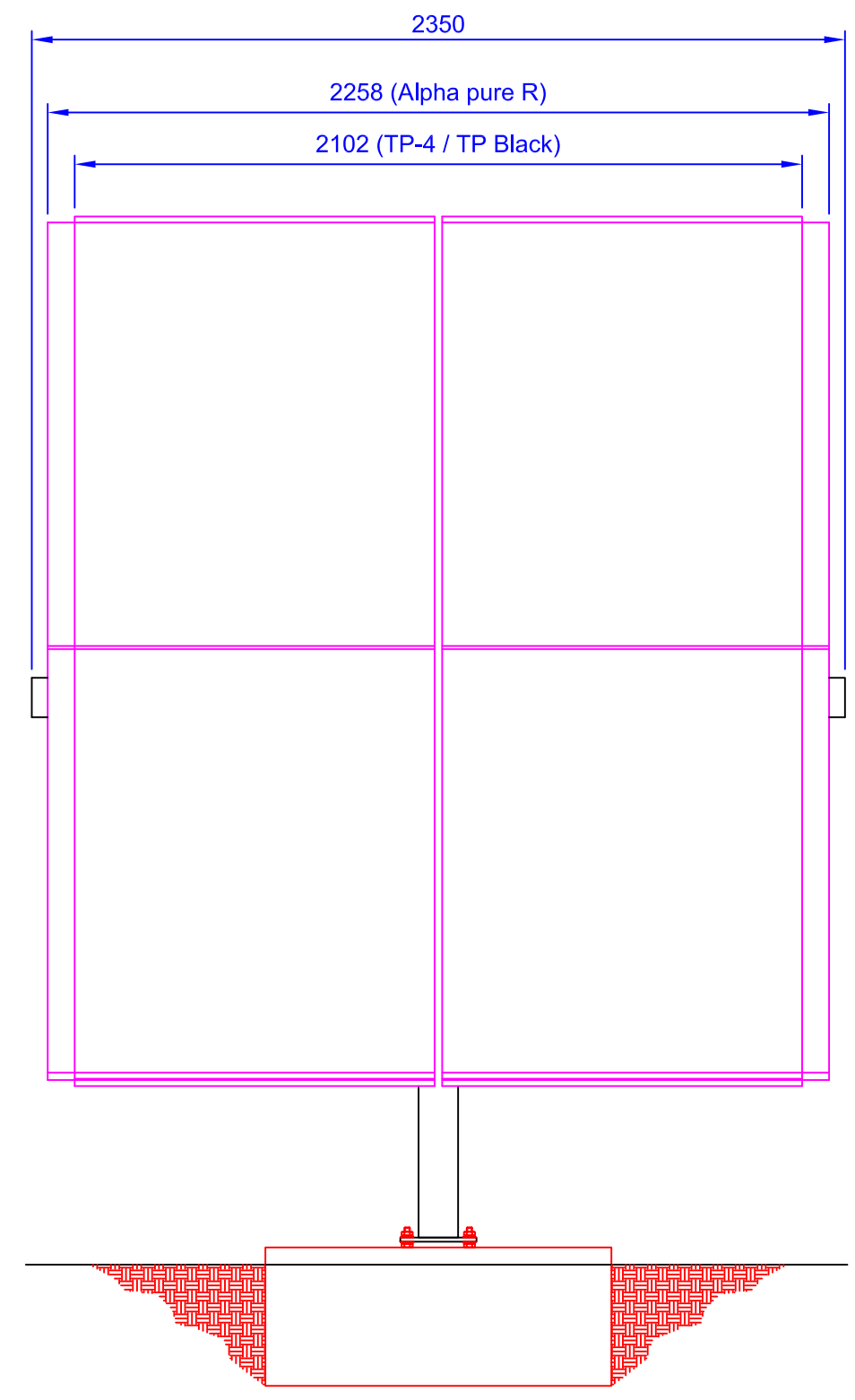
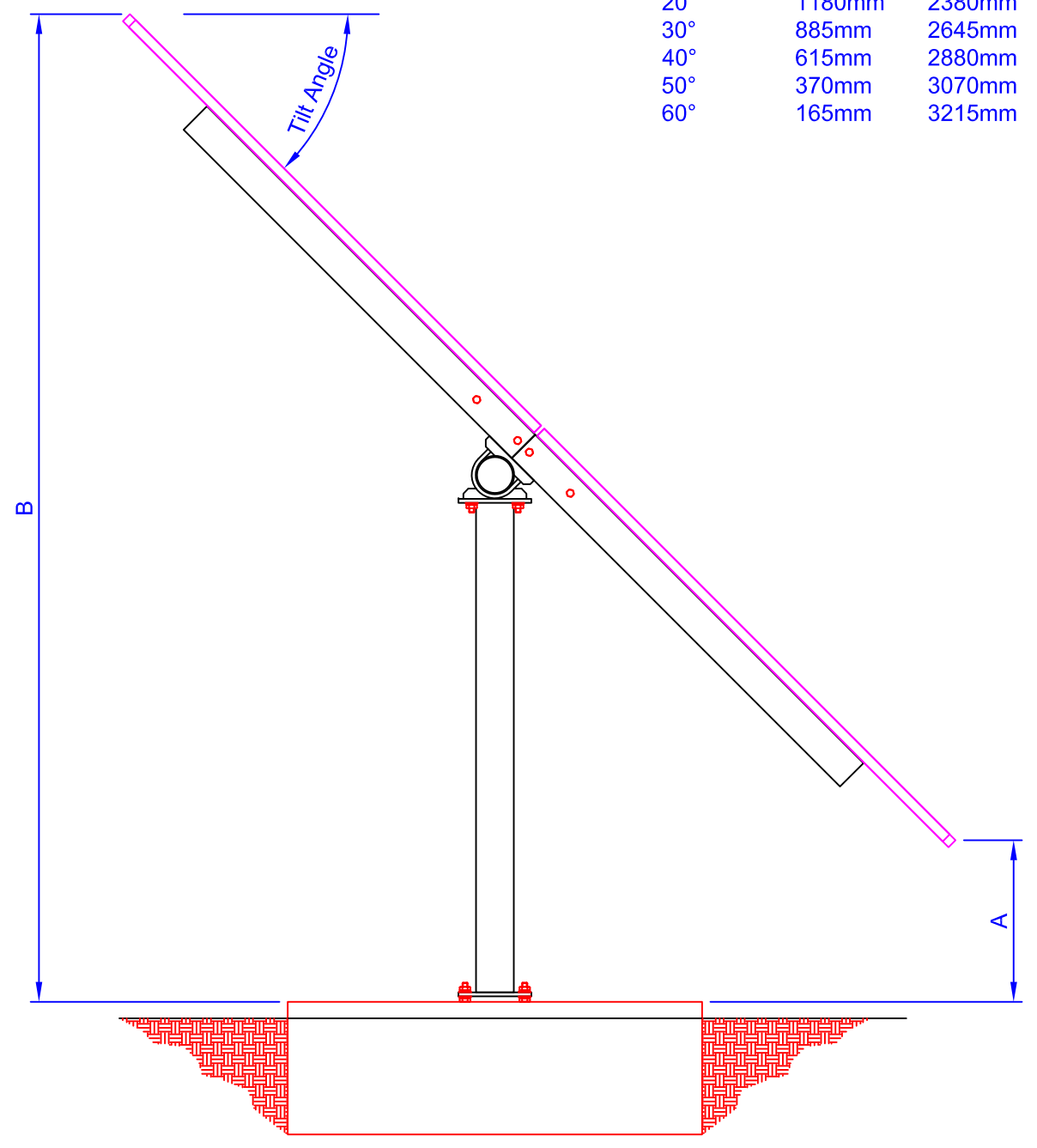


**Dimensions**

Tilt Angle	A	B
10°	1485mm	2095mm
20°	1180mm	2380mm
30°	885mm	2645mm
40°	615mm	2880mm
50°	370mm	3070mm
60°	165mm	3215mm

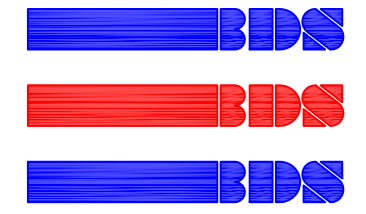


**Design Data.**

- Material: Mild steel
- Finish: Galvanised to BSEN ISO1461
- Fasteners: Galvanised steel
- Module fasteners: A4 stainless steel
- Wind Loding: 40 metres per second
- Foundation: Concrete Block (supplied by others)

Ground Anchor bolt set c/w Template supplied separately

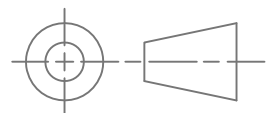
SHOWN AT 45° Tilt Angle (variable from 10° to 60°)



Tolerances.  
 NO D.Point ±1mm  
 1 D.Point ±0.5mm  
 2 D.Points ±0.2mm

1	T Brooks	29.10.2022	Production Issue
ISSUE	DRAWN BY	DATE	CHANGE
Material.			N4 Structure REC Panels
Finish.			
TP-4, TP Black, Alpha pure R			N TYPE
			No. 002 024

DO NOT SCALE



© 2022  
 This drawing is copyright and the property of BDS, it must not be copied in whole or in part, used for manufacture or otherwise disclosed without prior consent of BDS.