

# LORENTZ S1 - Dry Run Protection

## Accessory to provide run dry protection for variable water sources

### Description

The **S1-Dry Run Protection** provides a reliable method of run-dry protection.

It detects that water is present within a well, tank or other water source. The **S1-Dry Run Protection** is typically attached to the hose above the pump outlet and connected to the controller.

When the accessory becomes dry (water level is below the **S1-Dry Run Protection**) the pump switches off to avoid dry running.

### Features

- Reliable run-dry protection
- Simple to install using pre-fitted plug



### Technical Data

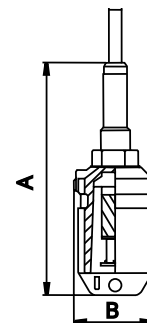
Sensor type	Mechanical float switch
Max. operating temperature	55 °C [131 °F]
Enclosure class	IP 68
Length of cable	15 m [50 ft]
Cable size	2 x 0.5 mm <sup>2</sup> - AWG 21
Plug type	M16 female
Plug enclosure class	IP67
Housing material	Polyoxymethylene
Mounting position	Vertical within 10°
Max. submersion depth	50 m [164 ft]
Restart time after dry detection	15 minutes
Standards requirements	CE

Find more about the Dry Run Protection [here](#)



### Dimensions and weights

A	95 mm [3.74 in]
B	32 mm [1.26 in]
Net weight	0.6 kg [1.32 lb]



### Order and Packaging information

Item number	19-001560
Product name	S1-Dry run protection switch with 15m/50ft cable
Packed gross weight	0.76 kg [1.68 lbs]
Packaging dimensions [LxWxH]	220 x 205 x 80 mm [8.7 x 8.1 x 3.1 in]
Packed volume	0.004 m <sup>3</sup> [0.141 ft <sup>3</sup> ]

