



12 STEP INSTALLATION GUIDE



Summary Extract
Refer to the Full Installation Manual

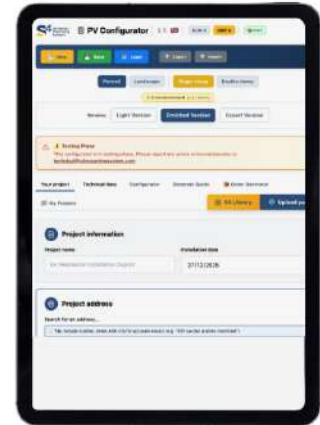


STEP 1

Project definition and preliminary checks

Refer to S4 Installation Manual Pages 12 to 15:

- Confirm roof type, roof pitch (12° to 70°) and PV array location.
- Use the **S4 configurator** to determine:
 - Number of fixings,
 - Batten layout,
 - Load assumptions (wind / snow).
- Verify compliance with **Eurocode 1, BS 5534** and applicable local requirements.
- Roofing works shall be carried out by a competent and qualified roofing professional.



S4 Configurator

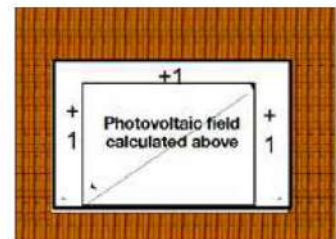
Any adaptation related to site tolerances, substrate specificities or local site conditions shall be carried out in **accordance with the S4 Installation Manual and recognised good practice.**

STEP 2

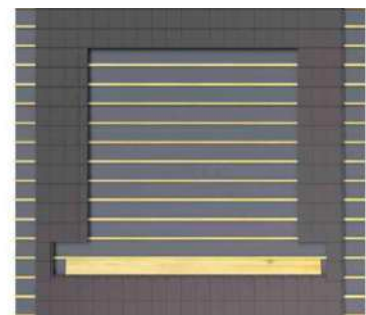
Roof preparation

Refer to pages 45 to 48

- Remove roof tiles or slates over the required width and height.
- Allow a **minimum lateral clearance of 200 mm** for side flashings.
- Install the roofing underlay in accordance with **EN 13859-1**.
- Prepare the **support battens for the lower flashing**, aligned with the roof pitch (maximum batten thickness: 18 mm).



TILE ROOF
1 extra row taken out

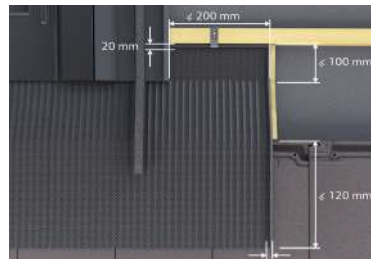
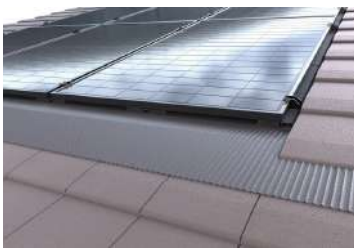
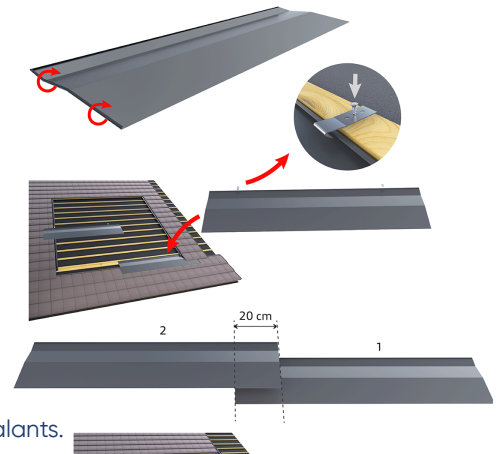


STEP 3

Installation of lower waterproofing

Refer to pages 30 to 39

- Install the lower waterproofing system (flexible, semi-rigid or rigid).
- Observe minimum overlaps:
 - 170 to 200 mm, depending on roof pitch and exposure.
- No fixings are permitted within water drainage zones.
- Weatherproofing relies on geometry, overlaps and gravity, not on sealants.



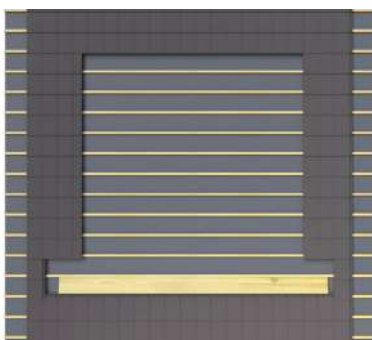
STEP 4

1 - Portrait layout: no battens required

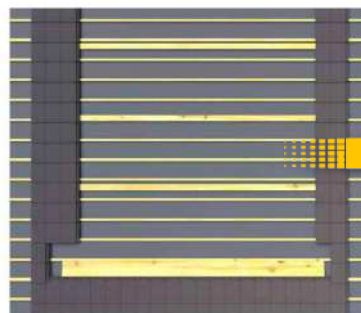
2- Landscape installation only: batten layout for PV modules

Refer to pages 49 and 51 (landscape) or 63 portrait sections

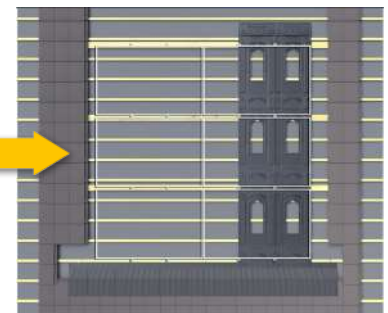
- Install **100 mm wide battens** between 2 rows of PV modules at the locations specified for **clamps fixings**.
- Batten spacing shall correspond to the PV module dimensions.
- Battens provide the structural load path and must be continuous, level and correctly aligned.



Portrait



Landscape



Landscape

STEP 5

Fixing of S4 plates

Refer to fixing zones Page 17

- Use the central hole of the plate to accurately locate the timber batten.
- Each S4 plate shall be fixed using one (1) fixing screw only:
 - Ø 6.3 × 25 mm
- Fixing shall be carried out exclusively within the designated "Fixing Area".
- Do not overtighten.
- Any fixing carried out outside the authorised fixing area is non-compliant.

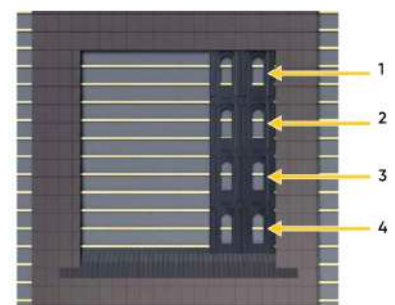


STEP 6

Installation of S4 trays

Refer to pages 52 to 55 (landscape) or 64 and 65 (portrait)

- Install trays from right to left, starting from the bottom row.
- Check correct overlap between adjacent trays.
- Install side adaptors at the ends of the PV array (END PV ARRAY).
- Observe the correct installation and orientation of tray corrugations at the array edges (END PV ARRAY).

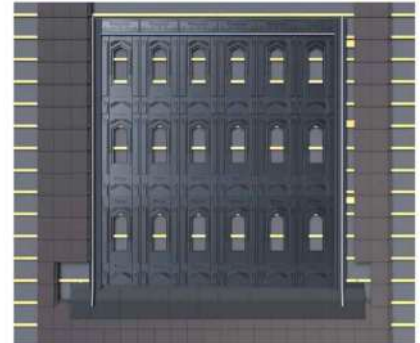


STEP 7

Side flashings and weatherproofing

Refer to pages 56 to 58

- Install side flashings on both sides of the PV array.
- Minimum overlap: 150 mm.
- Install the pre-compressed sealing strip:
 - Continuous,
 - Without interruption,
 - At the specified distance from the tray edges.



STEP 8

Top junction (Height Riser)

Refer to pages 40 to 42 & 59

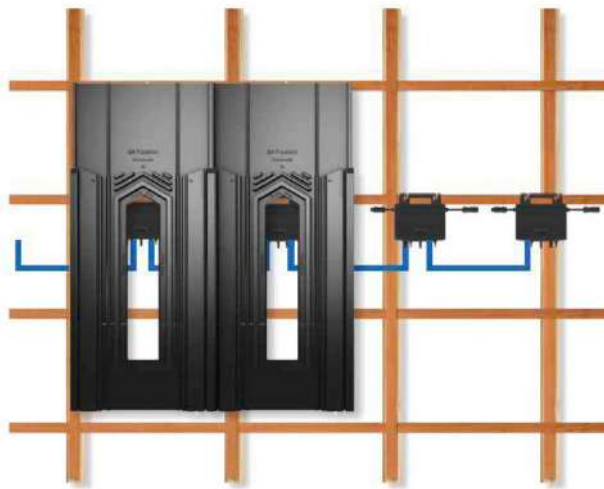
- Install the **S4 Height Riser** on the top row of trays.
- Pre-drill **Ø10 mm** holes at the indicated locations.
- Maintain a minimum overlap of **60 mm** with tiles or slates.
- Install the **pre-compressed sealing strip at the base of the S4 Height Riser**:
 - Continuous,
 - Without interruption.



STEP 9

Refer to Pages 43 to 45

- Route DC cables along the designated cable paths.
- Ensure continuity of equipotential bonding.
- Electrical design and earthing remain **the sole responsibility of the installer.**



STEP 10

Installation of clamps

Refer to pages 23–30 and 61–67



Single Clamp



Double Clamp

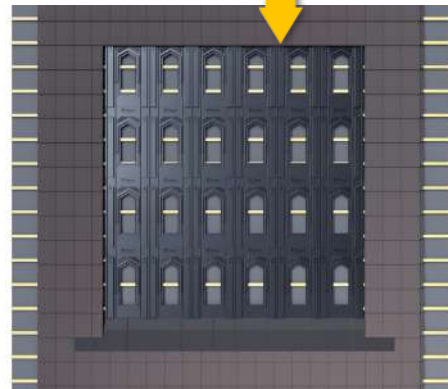
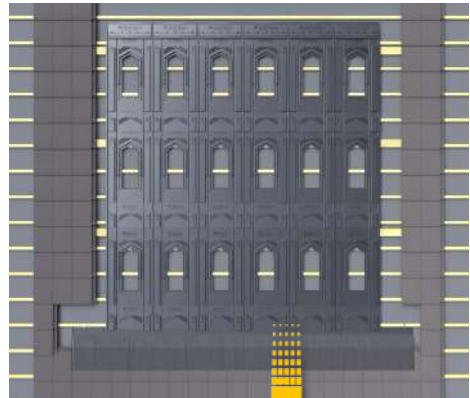
- Install single or double clamps in accordance with the configurator requirements.
- Clamps shall be fixed exclusively into the timber battens.
- Observe the PV module manufacturer's requirements for wind loading.

STEP 11

Reinstatement of roof covering

Refer to pages 59-60

- Reinstall tiles or slates above the system.
- Check:
 - Absence of stress points,
 - Correct overlaps,
 - Unrestricted water drainage.

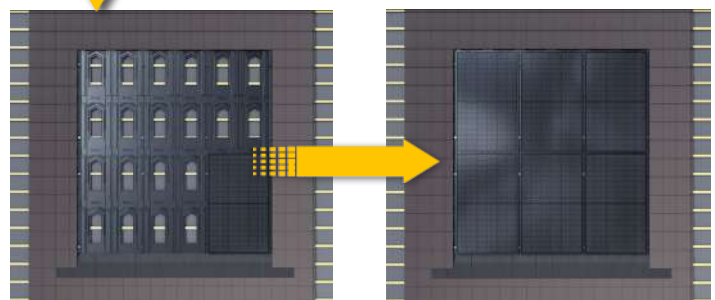
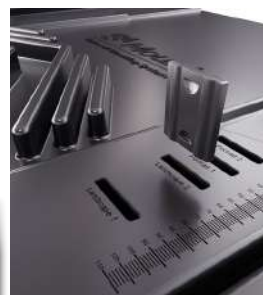


STEP 12

Installation of photovoltaic modules

Refer to Pages 22 to 23 and 61 to 67

- Insert the pins at the designated locations:
 - Portrait: Portrait 2 pins,
 - Landscape: Landscape 2 pins.
- Position the photovoltaic modules.
 Pins shall be positioned before the final placement of the photovoltaic modules.



LIMITATION AND LIABILITY

This step-by-step guide is provided for guidance and training purposes only. It does not replace the official S4 Installation Manual, which remains the sole contractual and technical reference document.

In the event of any discrepancy, ambiguity or site-specific condition, the S4 Installation Manual shall prevail.

The installer remains solely responsible for ensuring that the installation complies with recognised good practice, applicable standards, local regulatory requirements, and the instructions of the photovoltaic module and component manufacturers.

S4[®] RooFit[™]

Universal Mounting System



S4 MOUNTING SYSTEM

55 Avenue Marceau 75016 Paris - France

Tel: +33 9 55 17 82 59

Mail: contact@s4mountingsystem.com

www.s4mountingsystem.com