

# SINGLEFIX PRO

## PRODUCT SHEET

- + Direct fastening to self-supporting trapezoidal sheet metal roofs and sandwich panels
- + Unrivalled simplicity
- + Structurally optimised by lateral screw placement



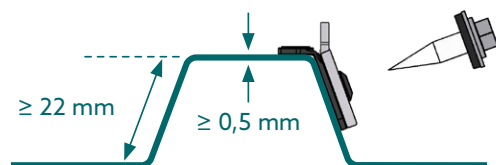
### SIMPLE DIRECT-FASTENING SOLUTION

Self-supporting trapezoidal sheet metal roofs may not always allow for fastening systems to be attached to the substructure. Similarly, sandwich panels do not allow for penetrations to the substructure due to problems with condensation. However, they often offer load-bearing capacity for direct fastening to the roof surface:

This is where SingleFix Pro offers an unrivalled, quick and easy fastening solution. The system uses Schletter module-bearing rails with the SingleFix Pro fasteners to allow for portrait and landscape module mounting.

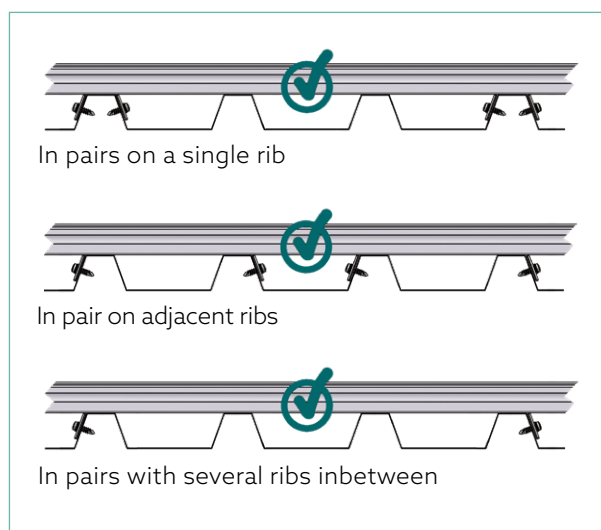
Fastening always comprises two plates attached symmetrically and opposing each other. →

### APPLICABLE DIMENSIONS



Trapezoidal sheets with a minimum rib height of 22 mm

### Attachment to trapezoidal sheet metal and sandwich panels



### NOT TO BE ATTACHED WITH THE SINGLEFIX PRO PLATES FACING THE SAME SIDE OF THE RIBS:

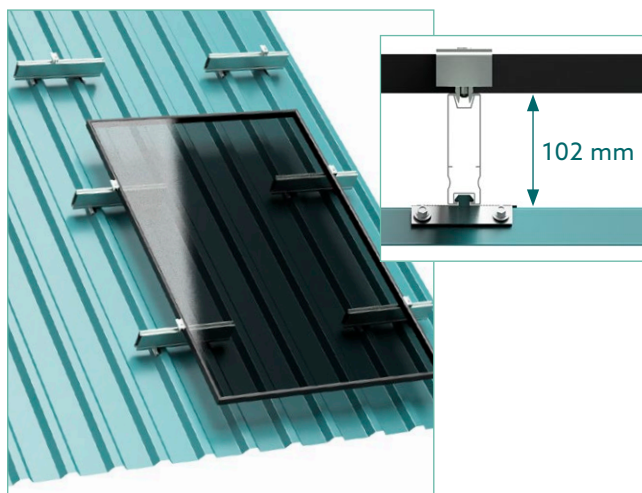


Never install on overlapping sheet edges.

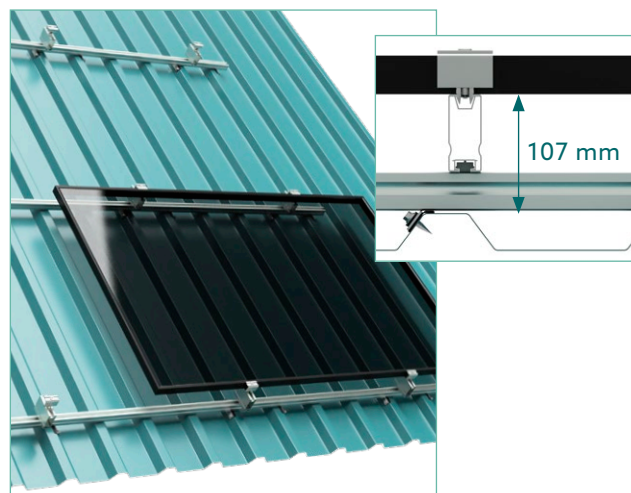


## SPECIFIC REQUIREMENTS OF SOME MODULES

When required, a gap of  $\geq 10$  cm between the roof cladding and module can be created for both portrait and landscape mounting.



Portrait mounting with Pro100  
Module-bearing Rail



Landscape mounting with Pro70 Twist-in Module  
Support and Pro35 Module-bearing Rail

## TECHNICAL DETAILS

<b>Scope of application</b>	Direct fastening to trapezoidal roofs with a sheet thickness from 0.5 mm
<b>Material</b>	System components: Aluminium and Stainless Steel Screws: Stainless Steel Gaskets: EPDM rubber
<b>Planning aid</b>	Configuration and design report using the Schletter Configurator
<b>Structural design</b>	Structural calculation based on current recognised rules of technology. Structural verification of the mounting system is based on the relevant Eurocodes in conjunction with general building inspectorate approvals. The load assumptions comply with DIN EN 1991-1 and the regulations of the national annex. Verification of roofing and building is not included. Notes in the verification must be observed.
<b>Warranty</b>	25 years in accordance with our Guarantee Terms and Conditions
<b>Supplementary documents</b>	SingleFixPro Installation Instructions Product Catalogue – Trapezoidal Sheet Fasteners

## PARTS LIST

**113009-003 SingleFix Pro** PU: 100

Two thin sheet metal screws per SingleFix Pro piece are required.



**943000-700** Thin Sheet Metal Screw 5.5 x 25 A2 with rubber washer  
ETA, ETN, MCS012 and German building regulations approved.  
Use in DE, FR, and UK.  
Only use on approved sandwich elements. PU: 100



**943000-360** Thin Sheet Metal Screw 6.0 x 25 A2 with rubber washer  
ETA, ETN, MCS012 and German building regulations approved.  
Use in DE, FR, and UK. PU: 100

**943001-232** Thin Sheet Metal Screw 6.0 x 22 A2 with rubber washer  
Use outside DE, FR, and UK. PU: 100



**120020-00450** Module Support Rail Pro35 450 mm PU: 50

**120023-00450** Module Support Rail Pro100 450 mm PU: 35



**120011-00450** Module Support Rail EcoLight 450 mm PU: 50

**121010-202** FixZ-7 System Rail18 lower 450 mm PU: 25

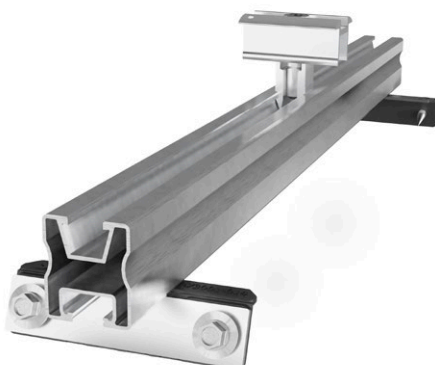
**121001-202** FixZ-7 System Rail18 upper 450 mm PU: 25

**121009-202** FixZ-15 System Rail18 lower 450 mm PU: 25

**121008-202** FixZ-15 System Rail18 upper 450 mm PU: 25



**119015-002** Punched Mounting Tape 6-50 m reel VPE: 1



### PLEASE NOTE:

We recommend connecting rails with punched mounting tape, using sheet metal screws for equipotential bonding.